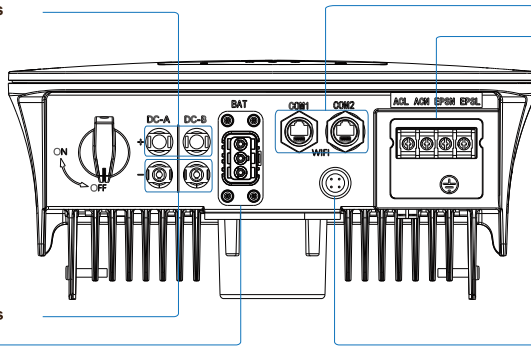


QUICK INSTALLATION GUIDE

OVERVIEW

DC Connectors (+) For PV Strings
DC Switch



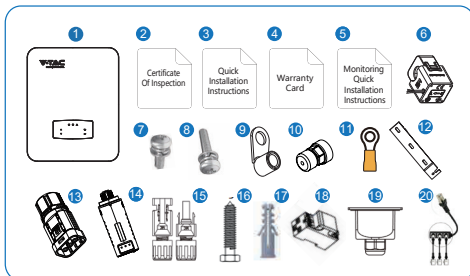
DC Connectors (-) For PV Strings
Battery Port

Communication Port
AC Port & EPS Port

Monitor Module Port

PACKAGE LIST

Please check to make sure the packing and all components are not missing or damaged. Please contact your dealer directly for supports if there is any damage or missing components.



| No. | Qty | Items | No. | Qty | Items |
|-----|-----|--|-----|-----|---------------------------------------|
| 1 | 1 | Hybrid Inverter | 11 | 1 | Grounding Terminal |
| 2 | 1 | Certificate Of Inspection | 12 | 1 | Wall Mounting Bracket |
| 3 | 1 | Quick Installation Instructions | 13 | 1 | Battery Connector |
| 4 | 1 | Warranty Card | 14 | 1 | Monitor Module |
| 5 | 1 | Monitoring Quick Installation Instructions | 15 | 1/2 | DC Connector |
| 6 | 1 | CT | 16 | 3 | Mounting Bracket Screw |
| 7 | 4 | AC Wiring Cover Screw | 17 | 3 | Plastic Expansion Tube |
| 8 | 1 | Security Screw | 18 | 1 | Smart Meter (Optional) |
| 9 | 4 | AC Wiring Terminal | 19 | 1 | AC Waterproof Cover |
| 10 | 2 | Communication Connectors | 20 | 1 | RJ45 Connector/ Communication Adapter |

FOR ENQUIRIES PLEASE CONTACT V-TAC'S AFTERCARE TEAM

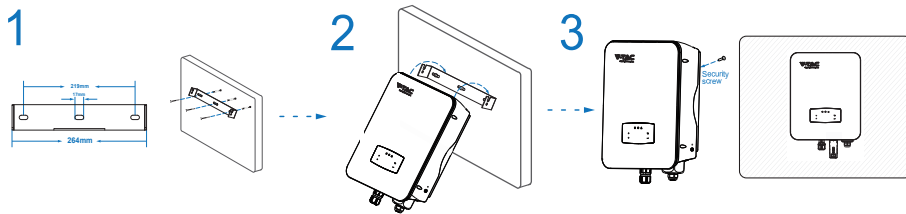
customer@vtacexports.com

+44 2072991212

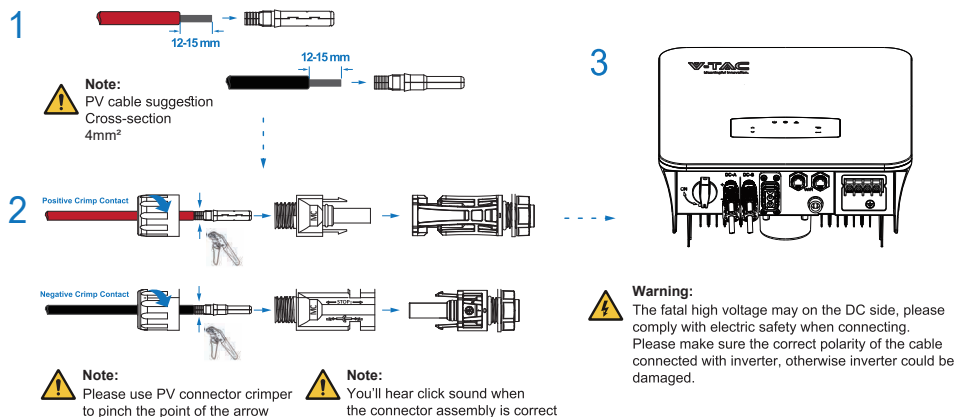
+447418377888

OPERATING HOURS : 8:30AM TO 5:30PM MONDAY - FRIDAY | 10:00AM TO 2:00PM ON SATURDAYS

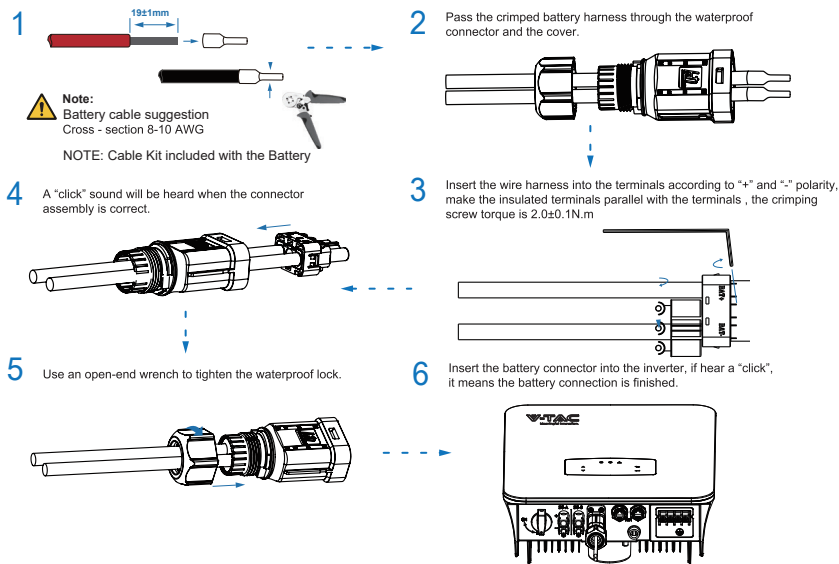
MOUNTING



PV CONNECTION



BATTERY CONNECTION



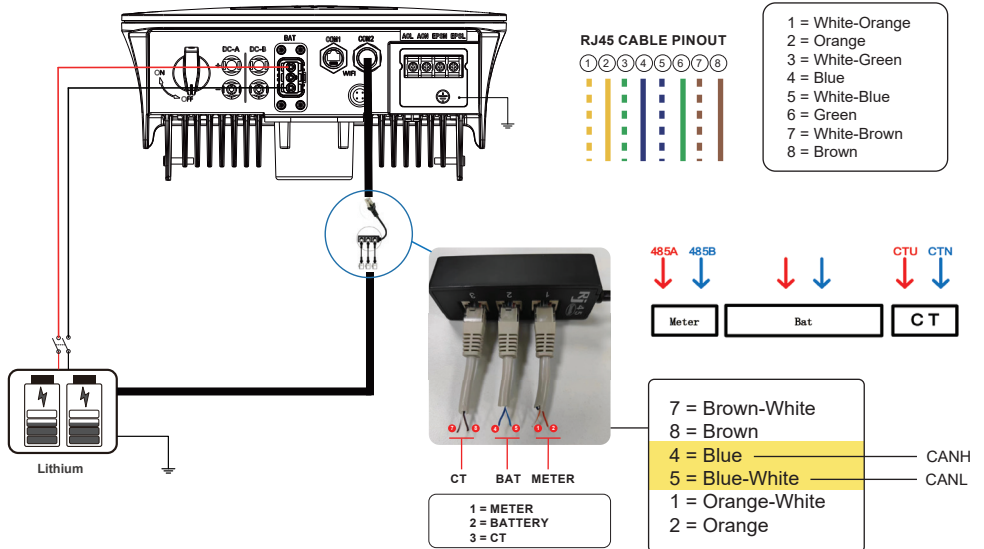
FOR ENQUIRIES PLEASE CONTACT V-TAC'S AFTERCARE TEAM

customer@vtacexports.com

+44 2072991212

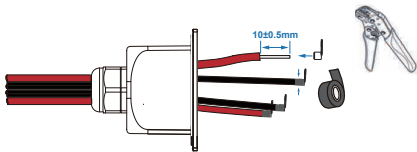
+447418377888

OPERATING HOURS : 8:30AM TO 5:30PM MONDAY - FRIDAY | 10:00AM TO 2:00PM ON SATURDAYS

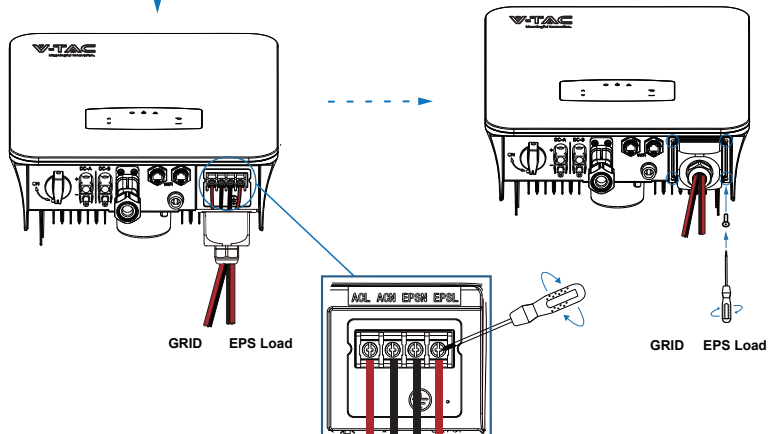


GRID AND EPS CONNETION

1



2



Note:

Cable suggestion Cross-section 8-10AWG.



Note:

The Max. power load connects to EPS port should not exceed the inverter's EPS Max. output power range.



Note:

The wiring terminals should be wrapped with insulation tape, otherwise it will cause a short circuit and damage the inverter.

FOR ENQUIRIES PLEASE CONTACT V-TAC'S AFTERCARE TEAM

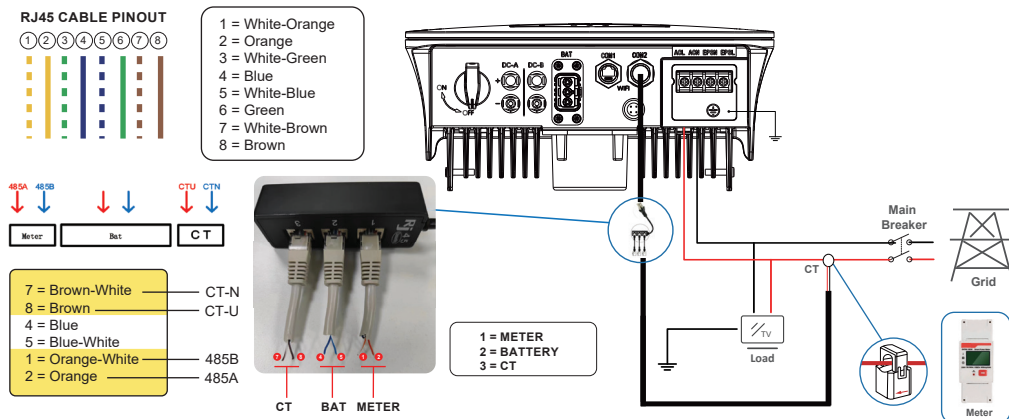
customer@vtacexports.com

+44 2072991212

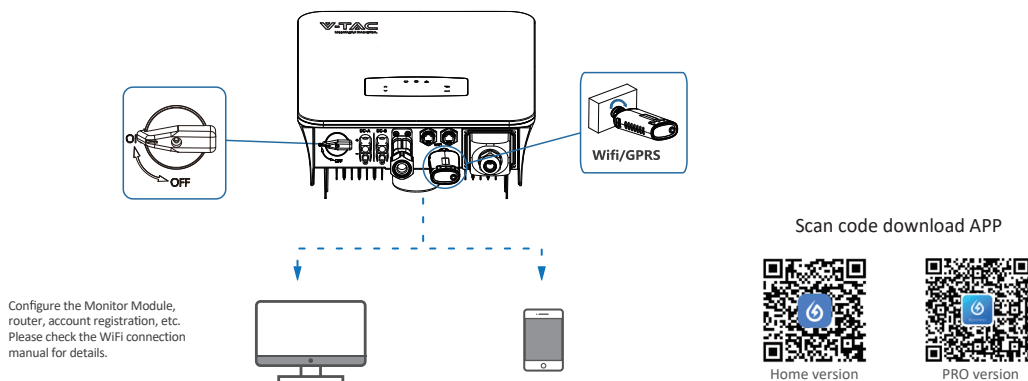
+447418377888

OPERATING HOURS : 8:30AM TO 5:30PM MONDAY - FRIDAY | 10:00AM TO 2:00PM ON SATURDAYS

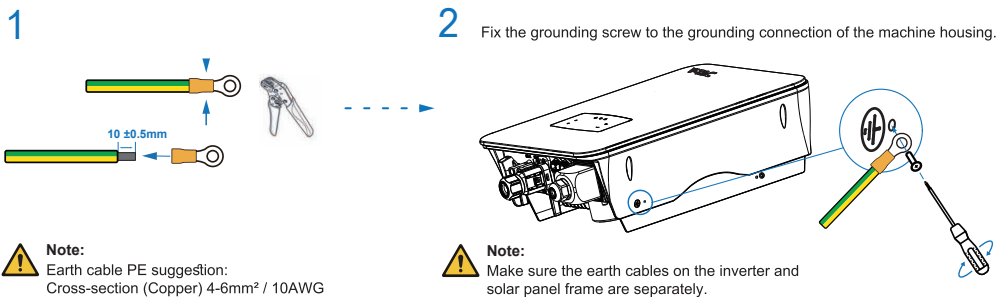
CT OR METER CONNECTION



WIFI CONNECTION



GROUND CONNECTION

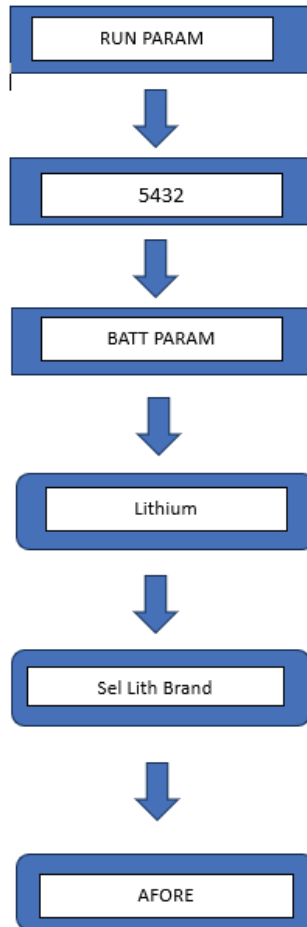


FOR ENQUIRIES PLEASE CONTACT V-TAC'S AFTERCARE TEAM




customer@vtacexports.com +44 2072991212 +447418377888

OPERATING HOURS : 8:30AM TO 5:30PM MONDAY - FRIDAY | 10:00AM TO 2:00PM ON SATURDAYS

BATTERY COMMISSIONING



FOR ENQUIRIES PLEASE CONTACT V-TAC'S AFTERCARE TEAM

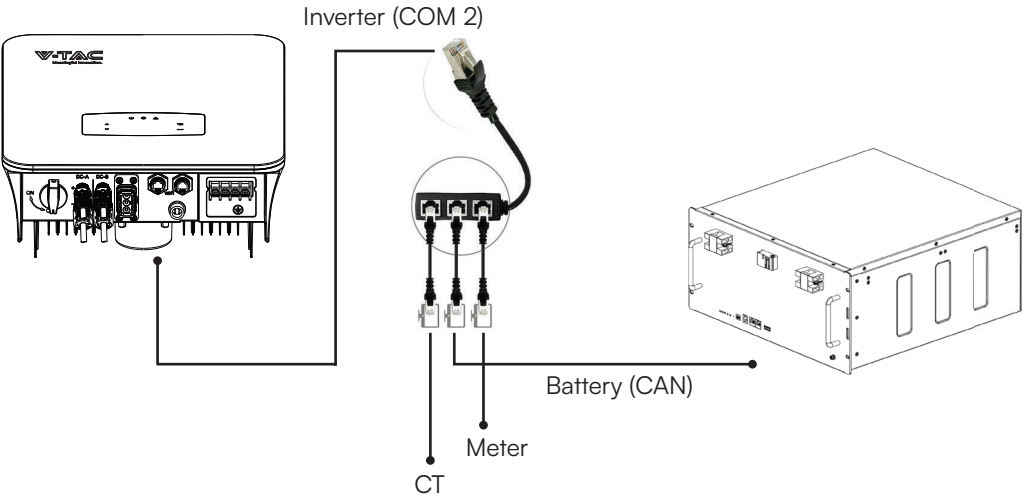
 customer@vtacexports.com  +44 2072991212  +447418377888

OPERATING HOURS : 8:30AM TO 5:30PM MONDAY - FRIDAY | 10:00AM TO 2:00PM ON SATURDAYS

INVERTER TO BATTERY COMMUNICATION

BATTERY SKU_s : 11524, 11525

NOTE: Cable Kit included with the Battery



PIN CONFIGURATION

INVERTER : PIN Configuration (COM 2)

| No. | COM1 | COM2 |
|-----|-------------|------------|
| 1 | NTC+ | Meter 485A |
| 2 | NTC- | Meter 485B |
| 3 | Dry Contact | BAT 485A |
| 4 | Dry Contact | BAT CANH |
| 5 | DRM | BAT CANL |
| 6 | DRM | BAT 485B |
| 7 | 485A | CTU |
| 8 | 485B | CTN |

BATTERY : PIN Configuration (CAN)

| PIN | Description |
|-----|--|
| 1 | RS485_B |
| 2 | RS485_A |
| 3 | CANO-H (communicate with the next battery) |
| 4 | CAN1-H (communicate with inverter) |
| 5 | CAN1-L (communicate with inverter) |
| 6 | GND_RS485 |
| 7 | CANO-L (communicate with the next battery) |
| 8 | / |

FOR ENQUIRIES PLEASE CONTACT V-TAC'S AFTERCARE TEAM

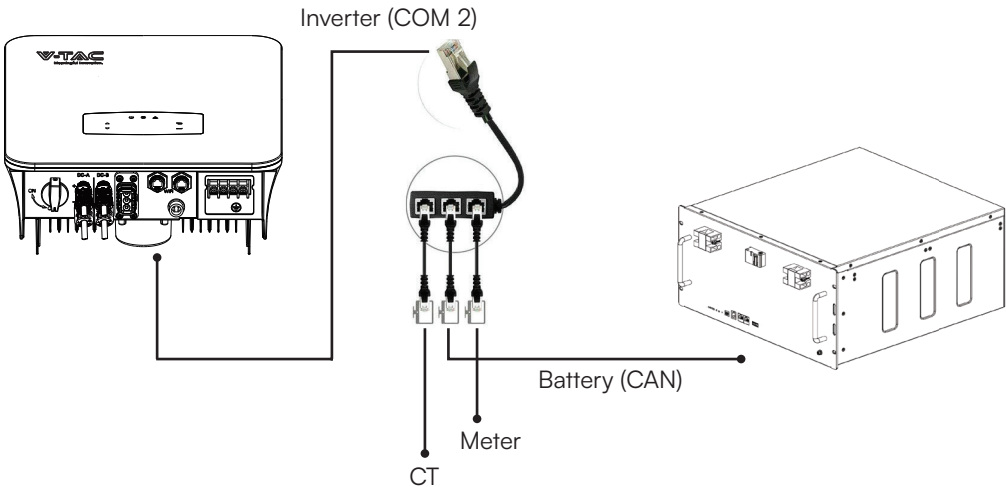
customer@vtacexports.com +44 2072991212 +447418377888

OPERATING HOURS : 8:30AM TO 5:30PM MONDAY - FRIDAY | 10:00AM TO 2:00PM ON SATURDAYS

INVERTER TO BATTERY COMMUNICATION

BATTERY SKUs : 11377, 11523, 11526

NOTE: Cable Kit included with the Battery



PIN CONFIGURATION

Inverter PIN Configuration (COM 2)

| No. | COM1 | COM2 |
|-----|-------------|------------|
| 1 | NTC+ | Meter 485A |
| 2 | NTC- | Meter 485B |
| 3 | Dry Contact | BAT 485A |
| 4 | Dry Contact | BAT CANH |
| 5 | DRM | BAT CANL |
| 6 | DRM | BAT 485B |
| 7 | 485A | CTU |
| 8 | 485B | CTN |

Battery PIN Configuration (CAN)

| PIN | Description |
|-------|-------------|
| 1/2/3 | NC |
| 4 | RS485_A |
| 5 | CAN_L |
| 6 | CAN_H |
| 7 | RS485_B |
| 8 | GND |

FOR ENQUIRIES PLEASE CONTACT V-TAC'S AFTERCARE TEAM

customer@vtacexports.com

+44 2072991212

+447418377888

OPERATING HOURS : 8:30AM TO 5:30PM MONDAY - FRIDAY | 10:00AM TO 2:00PM ON SATURDAYS