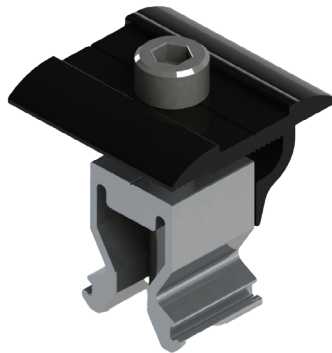


GS UNIVERSAL CLAMP

SKU	Colour
11750	Black
11793	Silver



Product properties

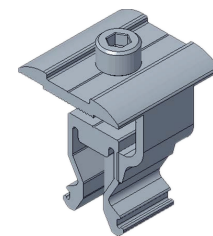
Material	Al6005-T5 and SUS304
Dimensions	40x40 mm
Weight	0,070 kg
Colour	Silver and Black
Pre-assembled	Yes

Application properties

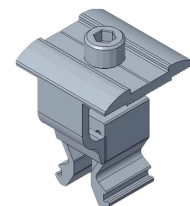
Function	Mid and end clamp
Max. fastening torque	14.5 Nm
Clamping range	35.0 - 46.0 mm
Distance of module	20.0 mm
Type of modules	Framed modules
Drive	Hexagon socket M8
Can be used with Rail system	GS Rail

Packing

Packing	400 pcs/ctn
---------	-------------



Mid Clamp



End Clamp

ONE CLAMP FOR ALL

Installation

