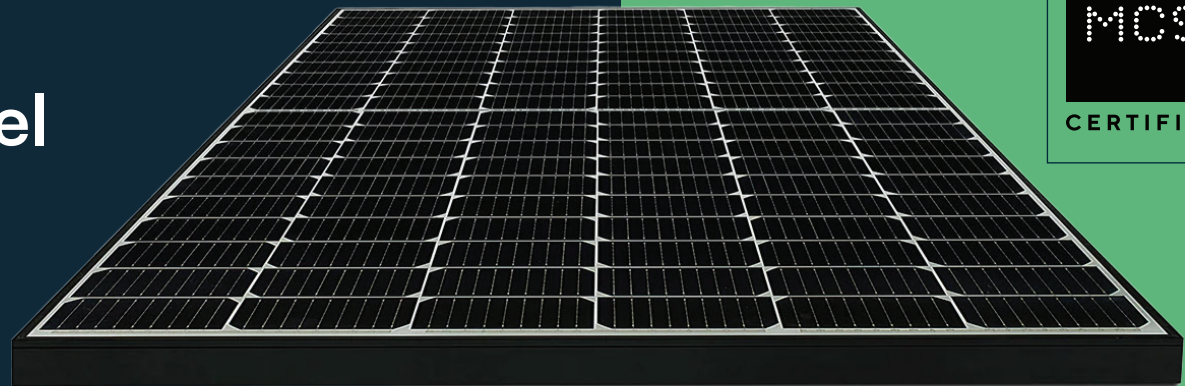


V-TAC

Meaningful Innovation.

410W

Mono Half Solar Panel



CERTIFICATION NUMBER
MCS BBA 6933



HALF-CUT TECHNOLOGY

New Circuit Design, Lower Internal Current And Lower Internal Resistance Loss



SIGNIFICANTLY AVOIDING HEAT SPOT

The unique circuit design to reduce the temperature Of heat spot significantly,so that to reduce the power loss And then increase the output of modules.



LOWER COST

Increasing power generation can reduce the cost per kilowatt-hour



EXCELLENT PERFORMANCE OF PID RESISTANCE

The performance of PID resistance(Potential Induced Degradation) passed the standard of TUV Nord.

V-TAC.EU



VTACEXPORTS.COM



LISTING DETAILS

Model No: **VT-410**
 SKU Code: **11561**
 EAN Code: **3800157698993**

MASTER BOX PACKAGING

Qty Per Pallet: **20ft Container: 6 Packages/186pcs | 40ft Container: 26 Packages/806pcs**
 Net Weight : **21.50kg**
 Product Size : **1722*1134*35mm**

ELECTRICAL DATA (STC)

Peak Power(Pmax)	410.00
Maximum Power Voltage(Vmp)	31.46
Maximum Power Current(Imp)	13.04
Open Circuit Voltage(Voc)	37.45±3%
Short Circuit Current(Isc)	13.85±3%
Module Efficiency(%)	20.97

ELECTRICAL DATA (NOCT)

Peak Power(Pmax)	304.8
Maximum Power Voltage(Vmp)	29.20
Maximum Power Current(Imp)	10.44
Open Circuit Voltage(Voc)	35.05±3%
Short Circuit Current(Isc)	11.16±3%

MECHANICAL CHARACTERISTICS

Cell Type	182*91 Mono
No. of Cells	108 (12*9)
Front Glass	3.2mm high transmission, low iron, tempered glass
Frame	Anodized Aluminium Alloy
Junction box	IP67/IP68 3diodes
Output cables	4mm ² cable 100cm (Including MC4 connector)
MaxWind Load/Snow Load	2400Pa/5400Pa

TEMPERATURE & MAXIMUM RATING

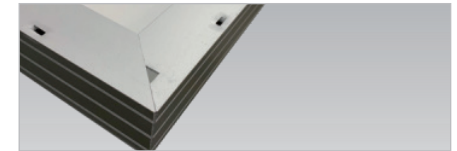
Maximum System Voltage (V)	1500 V
Maximum Series Fuse Rating (A)	25A
Power Tolerance	0~+3 W
Pmax Temperature Coefficient (W/°C)	-0.350 %/°C
Voc Temperature Coefficient (V/°C)	-0.285 %/°C
Isc Temperature Coefficient (A/°C)	+0.045 %/°C
NOCT Nominal Operating Cell Temperature (°C)	45±2°C
Operating and Storage Temperature (°C)	-40~+85°C



JUNCTION BOX

Waterproof protection grade:IP67/IP68
 Safety Level: Class II
 Maximum System Voltage: 1500V

Outstanding waterproof level. Effectively resist harsh environments

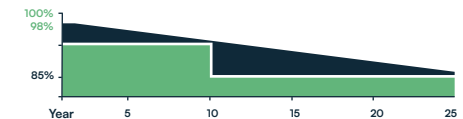


FRAME

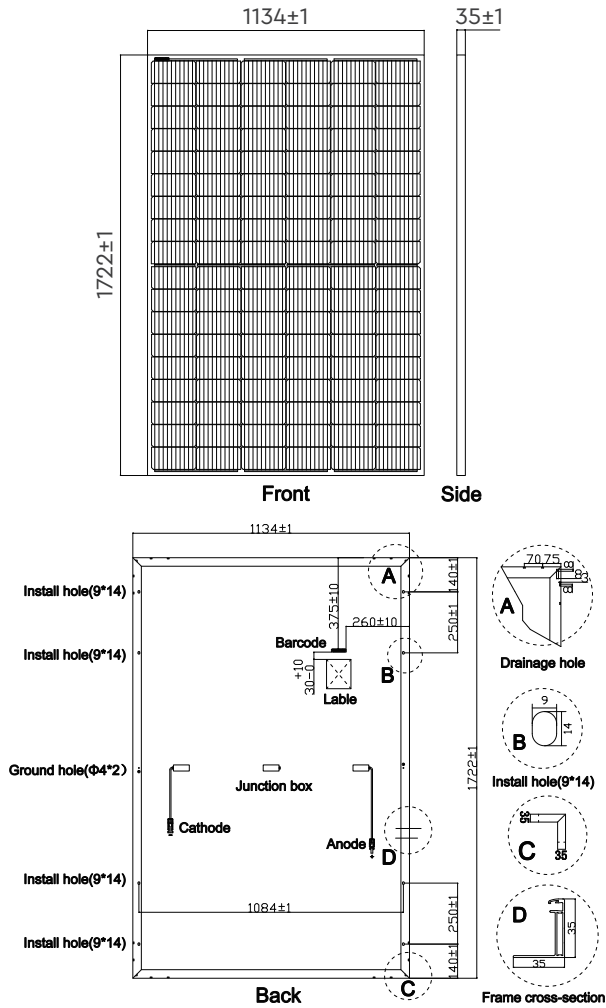
Strong machinical load resistance up to 5400Pa
 Anodic oxidation layer resistant to chemical corrosion
 available in black

12 YEAR
 WARRANTY
 PRODUCT MATERIAL

25 YEAR
 WARRANTY
 LINEAR POWER OUTPUT



DRAWING AND DIMENSION



IV CURVE

