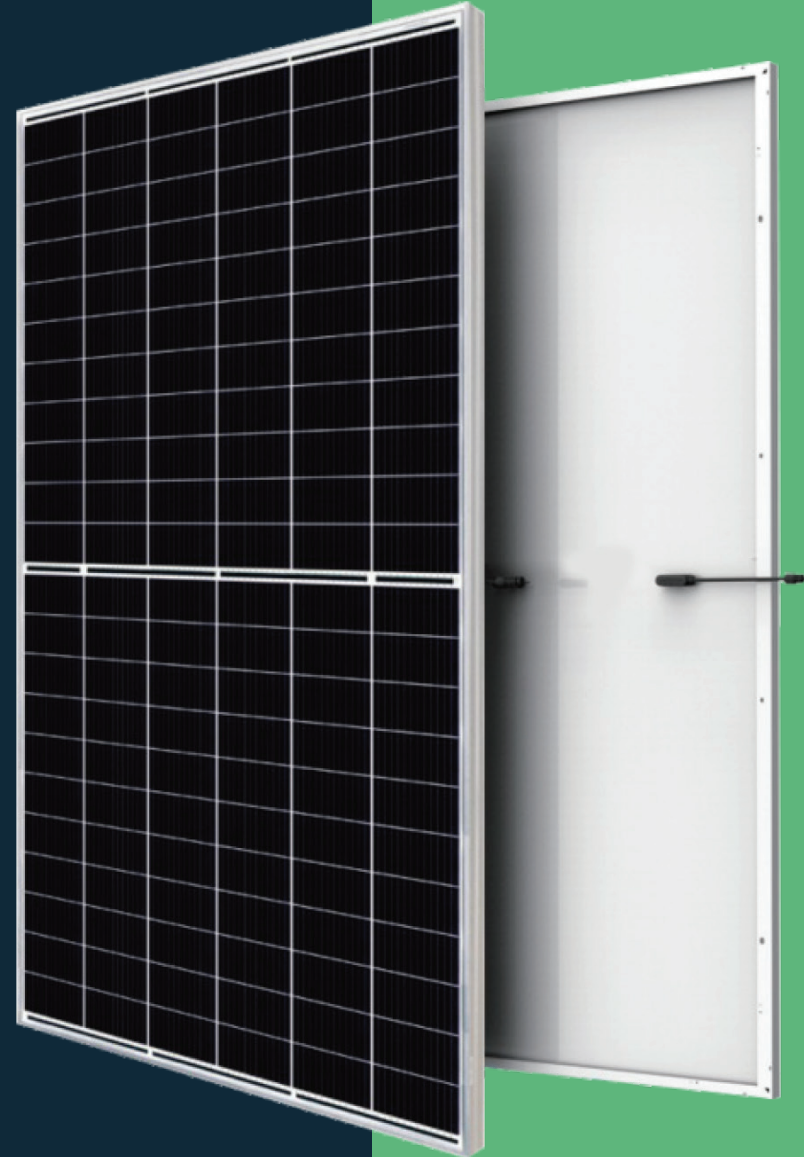


# V-TAC

Meaningful Innovation.

## 665W

## Mono Half Solar Panel



### HALF-CUT TECHNOLOGY

New Circuit Design, Lower Internal Current And Lower Internal Resistance Loss



### SIGNIFICANTLY AVOIDING HEAT SPOT

The unique circuit design to reduce the temperature Of heat spot significantly,so that to reduce the power loss And then increase the output of modules.



### LOWER COST

Increasing power generation can reduce the cost per kilowatt-hour



### EXCELLENT PERFORMANCE OF PID RESISTANCE

The performance of PID resistance(Potential Induced Degradation) passed the standard of TUV Nord.

V-TAC.EU



VTACEXPORTS.COM



## LISTING DETAILS

Model No: **VT-665**  
 SKU Code: **11544**  
 EAN Code: **3800157697286**

## MASTER BOX PACKAGING

Qty Per Pallet: **31pcs/pallet**  
 Net Weight : **33.90kg**  
 Product Size : **2384\*1303\*35mm**

## ELECTRICAL DATA (STC)

Peak Power(Pmax)	665.00
Maximum Power Voltage(Vmp)	38.00
Maximum Power Current(Imp)	17.50
Open Circuit Voltage(Voc)	45.80±3%
Short Circuit Current(Isc)	18.58±3%
Module Efficiency( % )	21.40

## ELECTRICAL DATA (NOCT)

Peak Power(Pmax)	504.0
Maximum Power Voltage(Vmp)	35.40
Maximum Power Current(Imp)	14.24
Open Circuit Voltage(Voc)	43.00±3%
Short Circuit Current(Isc)	14.98±3%

## MECHANICAL CHARACTERISTICS

Cell Type	210*105 Mono
No. of Cells	132 (12*11)
Front Glass	3.2mm high transmission, low iron, tempered glass
Frame	Anodized Aluminium Alloy
Junction box	IP67/IP68 3diodes
Output cables	4mm <sup>2</sup> cable 55cm (Including MC4 connector)
MaxWind Load/Snow Load	2400Pa/5400Pa

## TEMPERATURE & MAXIMUM RATING

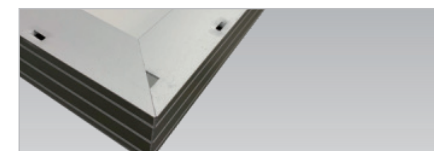
Maximum System Voltage (V)	1500 V
Maximum Series Fuse Rating (A)	30A
Power Tolerance	0~+3 W
Pmax Temperature Coefficient (W/°C)	-0.340 %/°C
Voc Temperature Coefficient ( V/°C)	-0.250 %/°C
Isc Temperature Coefficient ( A/°C)	+0.040 %/°C
NOCT Nominal Operating Cell Temperature (°C)	45±2°C
Operating and Storage Temperature (°C)	-40~+85°C



## JUNCTION BOX

Waterproof protection grade:IP67/IP68  
 Safety Level: Class II  
 Maximum System Voltage: 1500V

Outstanding waterproof level. Effectively resist harsh environments

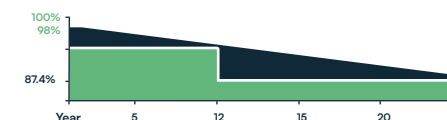


## FRAME

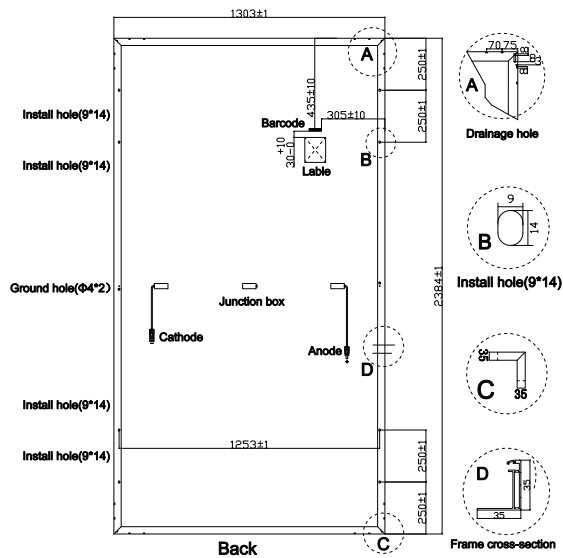
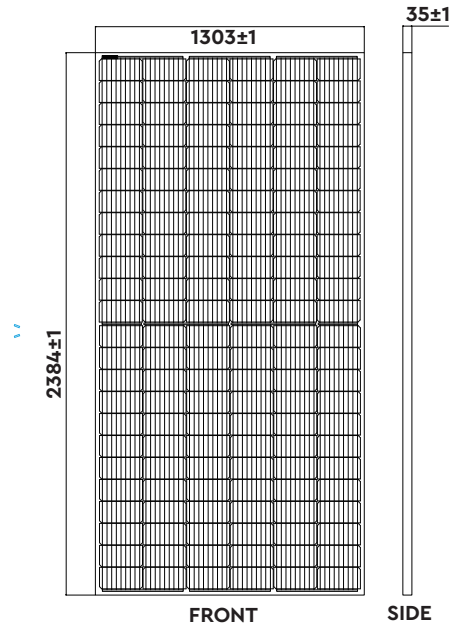
Strong machinical load resistance up to 5400Pa  
 Anodic oxidation layer resistant to chemical corrosion  
 available in silver and black

**12** YEAR  
 WARRANTY  
 PRODUCT MATERIAL

**30** YEAR  
 WARRANTY  
 LINEAR POWER OUTPUT



## DRAWING AND DIMENSION



## IV CURVE

